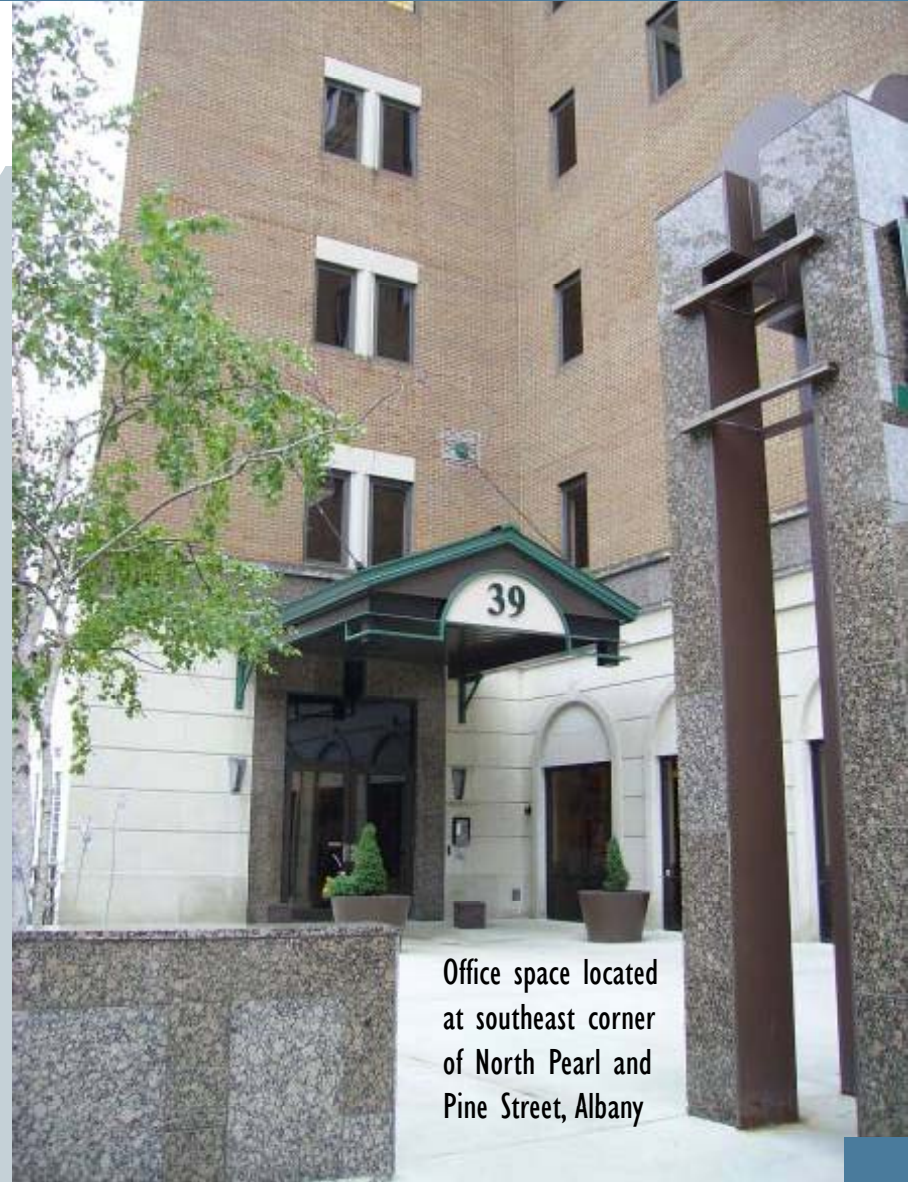


39 North Pearl Street — Law Firm Office

Traditional furnishings in classic navy and gold provide an upscale and refined ambience. Flooring, upholstery and wall finishes were chosen with minimal off-gassing for optimal air quality

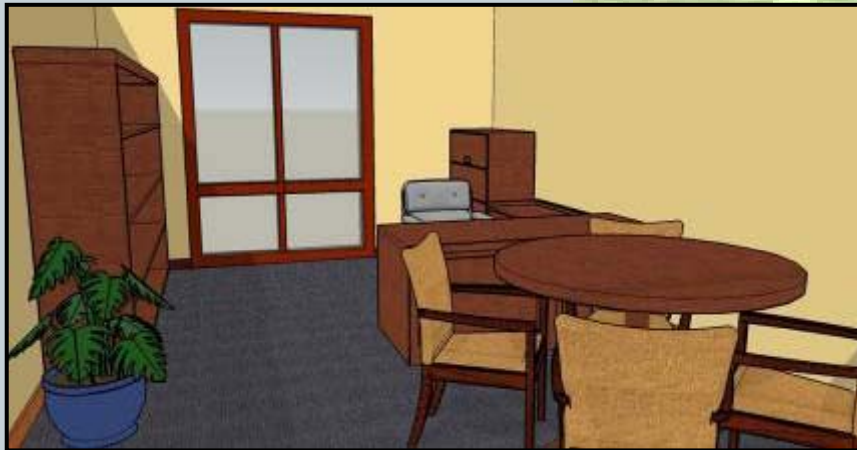
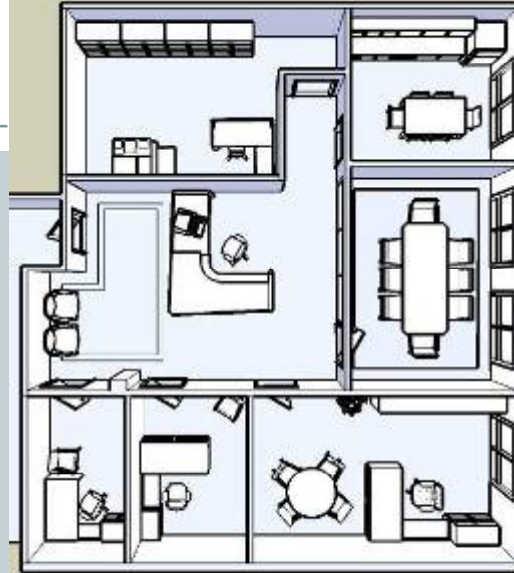


Office space located at southeast corner of North Pearl and Pine Street, Albany

39 North Pearl Street — Law Firm Office

Office Features

- Generous entrance lobby
- Spacious Executive Office with windows overlooking Maiden Lane Park
- 2 private offices
- Conference room sits 8 & has floor to ceiling windows with park view
- Staff kitchen with dining area for 6
- Large multi-use space for office files, copier, & staff



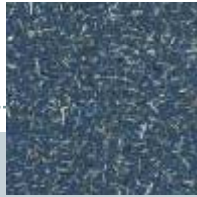
Executive Suite



River Front Bridge to Corning Preserve

39 North Pearl Street — Law Firm Office

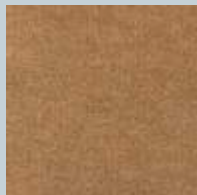
Finishes



Abaca Recycled Rubber &
Banana Leaf Flooring



Design Weave's Bar
None in Cousteau



Shaw's Coral Beach in
Inside Out



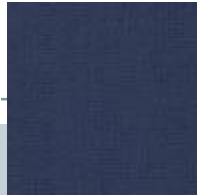
Shaw's Loring Hills

Green Flooring

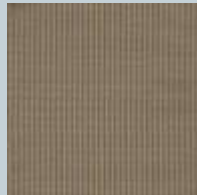


39 North Pearl Street — Law Firm Office

Furniture & Fabrics



Carnegie Transit



DesignTex Sunflower



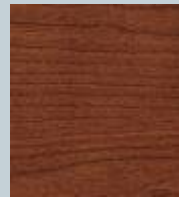
Vsource Artesian-Lapiz



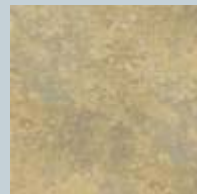
VSource Artesian-Gold



Gunlocke Carver Guest Chair



Cherry Wood Finish
in Cinnamon



Wilsonite Sierra Marble



Gunlocke Kensington Reception Desk



Gunlocke Kensington Conference Table and Case goods

39 North Pearl Street — Law Firm Office

Building & Suite Amenities

- On-site sub-grade parking garage
- Suites wired for high-speed internet
- Suite faces Maiden Lane Park & Pedestrian walking bridge to Corning Preserve
- Walking distance to courthouses, NYS Capitol & various municipal buildings
- Recently upgraded common areas
- Handicap accessible



Lobby & Reception Area



Kitchen & Lunch Room